

AMERICAN  
HERITAGE  
HOMES



*Seal of  
Quality*



Elevation A with Siding

## *The Savannah*

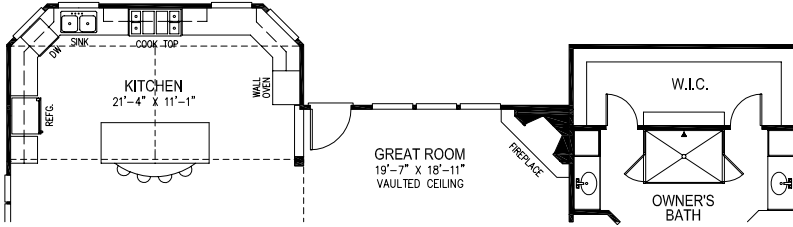
The classy exterior look, shows off this 3,000 square foot home with its luxury first floor owner's suite.

The front elevation disguises the depth of the home and the overall size. The two story family room with a floor to ceiling framed fireplace and a rear wall of windows exudes a warm, cozy feeling. The over sized kitchen that spills into a huge breakfast room all add value to leisurely living in the Savannah.

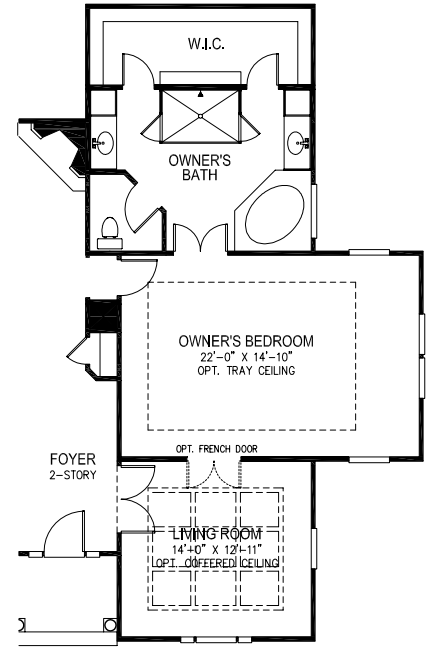
The second floor can be closed off when not in use or opened to guests. The two second floor bedrooms share a loft area as well as a bath. Country elegance at its best.

---

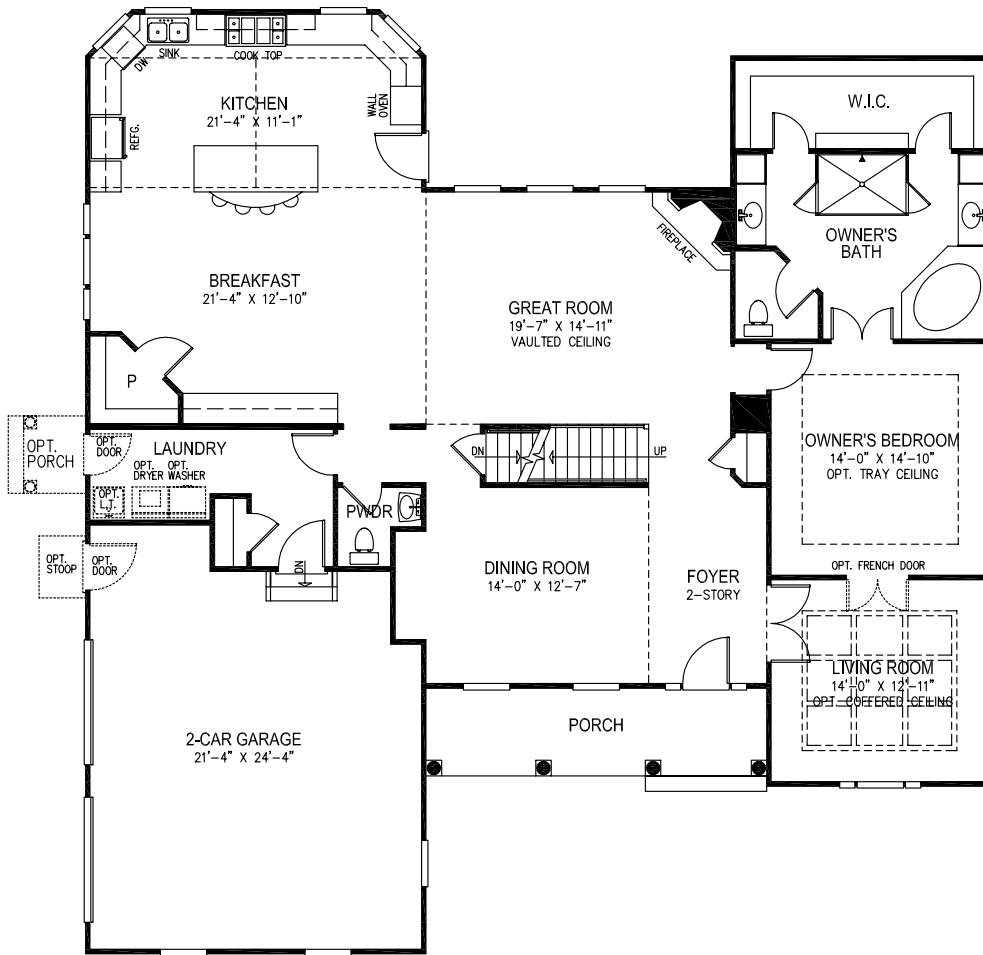
# The Savannah



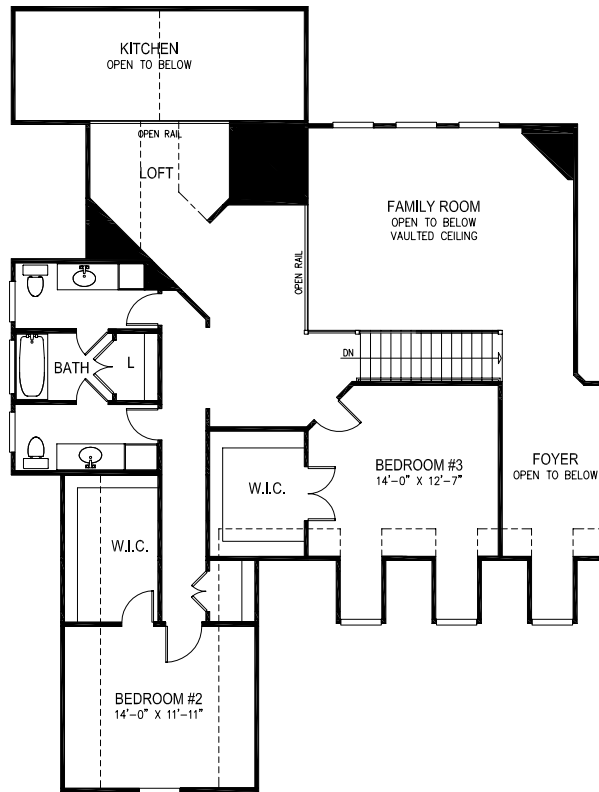
Partial First Floor Plan  
w/ Opt. Extended Great Room



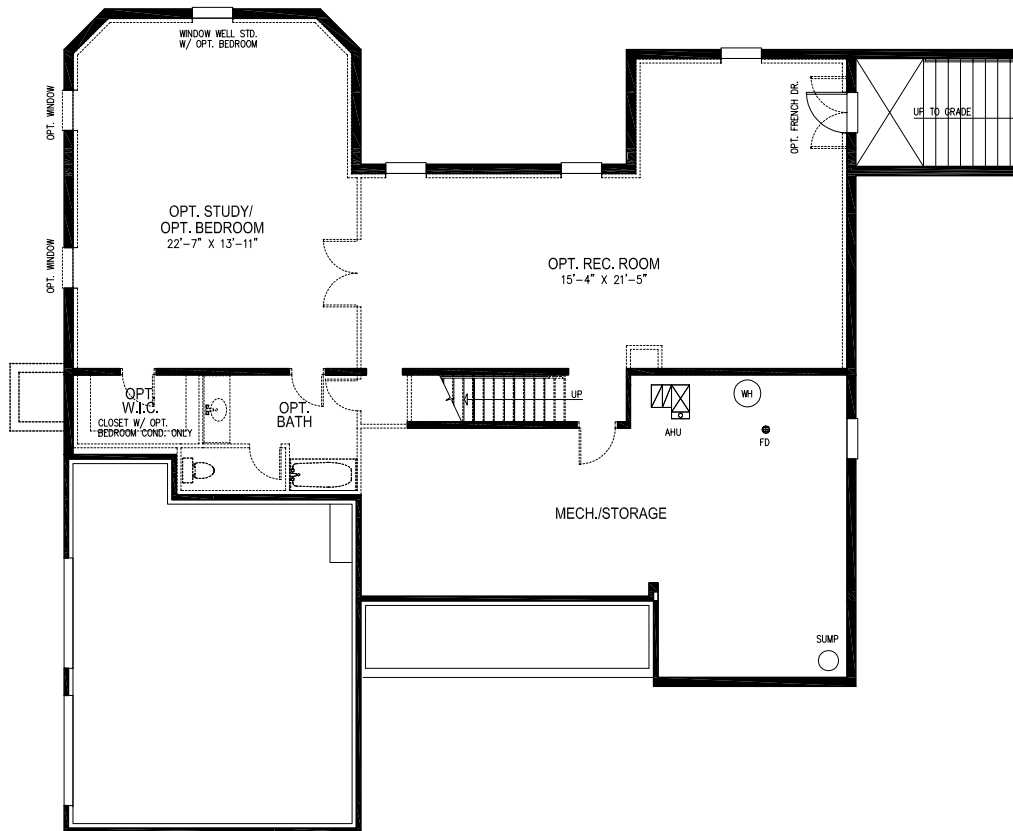
Partial First Floor Plan  
w/ Opt. Owner's Bedroom



First Floor Plan



**Second Floor Plan**



**Foundation Plan - Inground Condition**

# The Savannah

9201 ELYS FORD ROAD  
FREDERICKSBURG, VA 22407  
[www.AHHVA.com](http://www.AHHVA.com)  
1-800-892-4747  
*A Pruitt Company*

The renderings depicted in this brochure represent artist concepts. Please see your sales representative for specific details regarding the elevations, plans, pricing, dimensions, specifications, or products offered in the community.  
We reserve the right to make modifications or changes without notice or obligation.

